

EVERMATIC

LEADER IN PROTECTIVE EQUIPMENT

Evermatic AirTec

PAPR



EVERMATIC 

Take respiratory protection to the next level

EVERMATIC 



PIONEER IN PROTECTIVE GEAR

Evermatic is one of the most trusted manufacturers and experts in personal protective equipment in Finland. Our welding helmets and powered air purifying respirators (PAPR) are renowned for their excellent quality, safety, and durability. We have a broad dealer network in Europe and collaborate with several renowned brands in the industry.

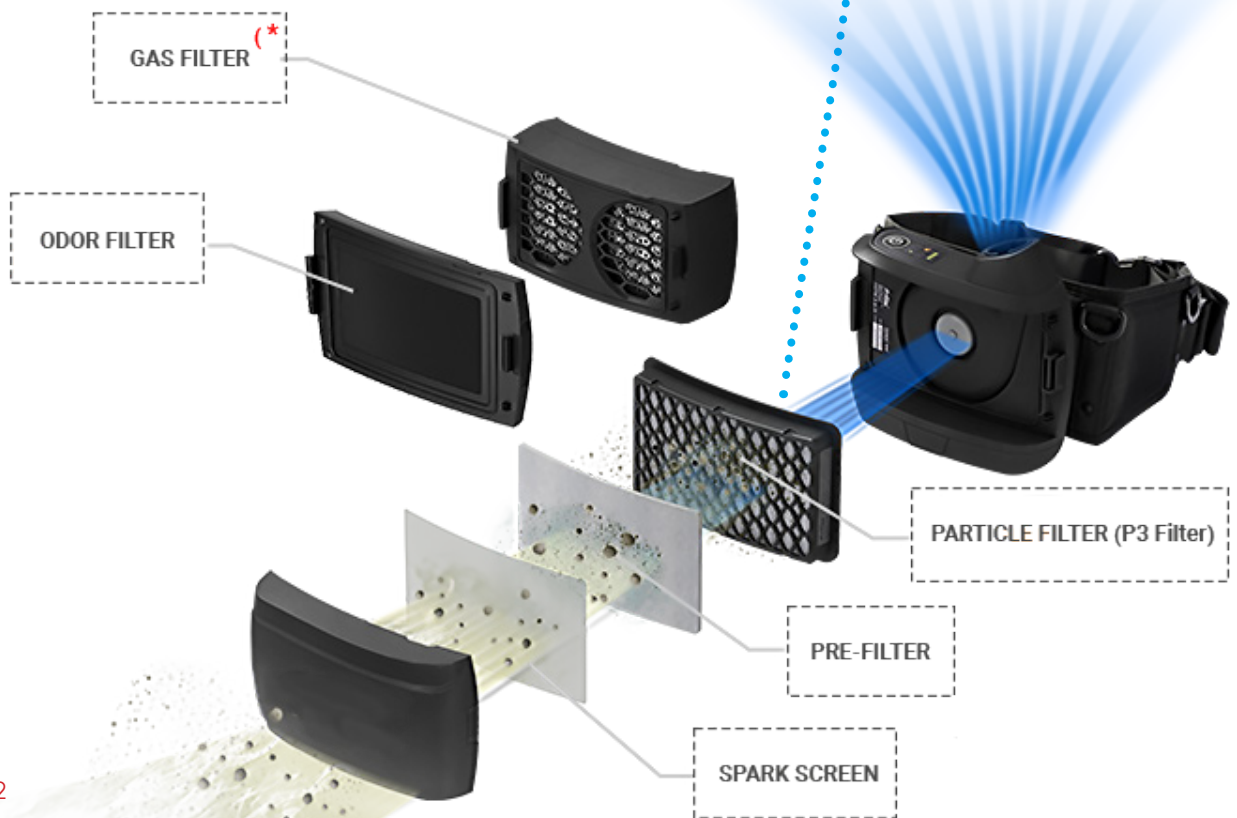
Our top priority is to provide professionals and enthusiasts with safe, functional, and comfortable protective gear. This commitment drives us to continuously develop and refine our products to meet the highest standards.

As a result, we have successfully created a comprehensive and versatile range of protective equipment that ensures reliability and ease of use in demanding environments.

Evermatic AirTec All-in-One system

Take your respiratory protection to new heights with the Evermatic AirTec! This powered air purifying respirator (PAPR) protects you by efficiently filtering smoke, gases, and other solid or liquid aerosols from the air you breathe while performing welding, grinding, or putting a finish on a metal piece. It filters up to 99.997% of harmful particles and contaminants, including:

- Dust, such as welding and metal dust
- Solid and liquid particles (including those containing oil)
- Mists and fumes generated from grinding, welding, cutting, and drilling metal
- Spray droplets from spraying
- Organic vapors and gases



*) A1B1E1K1 OR A2

Evermatic AirTec All-in-One system

Intelligent Control and Alarm System

The Evermatic AirTec respirator's motor automatically adjusts power and airflow based on the filter's capacity, ensuring that you always breathe fresh and clean air, regardless of the working conditions. Your safety is guaranteed by a triple alarm system. When the filter is blocked or the battery is low, a flashing alarm light activates, and the motor unit emits a sound alarm and vibrates.

Powerful motor

The high-quality brushless motor ensures a strong airflow and low power consumption. It operates very quietly and has a lifespan up to three times longer than that of conventional motors



Experience the next generation of respiratory protection that combines intelligence, safety, and efficiency.

A more powerful and safer respirator for you!

Evermatic AirTec Filters

When you need strong protection against hazardous gases and vapors, choosing the right gas filter is crucial. Here are a few tips to help you select the best option for you:

A1B1E1K1-Combination Filter

This versatile filter offers broad protection against a variety of harmful substances, such as organic and inorganic gases and vapors, sulfur dioxide, acidic gas and vapor forms, as well as ammonia and its derivatives. It is an excellent choice for situations where you are exposed to multiple hazardous substances simultaneously.

A2-Combination Filter

If you need protection specifically from organic gases and vapors, the A2 filter is an excellent option. It offers a moderate absorption capacity, which is sufficient for many industrial and workplace needs where the concentrations of organic substances are moderate



Ord.No. 950019
A2 combination filter



Ord.No. 950020
A1B1E1K1 combination filter

Odor Filter

When you are not using a gas filter, you can utilize an activated carbon or odor filter to eliminate unpleasant smells. This is particularly beneficial in workplaces where unpleasant odors may impact productivity and comfort.



Ord. No. 950018 activated carbon filter



Ord. No. 950010 P3-filter

Filter options and their combinations:

- ° P3 particle filter + A1B1E1K1 combination filter
- ° P3 particle filter + A2 combination filter
- ° P3 particle filter + odor filter

Evermatic AirTec Batterys

Efficient and Fast-Charging Lithium Batteries

When you require reliable and long-lasting power for your workday, our lithium batteries offer precisely what you need. Choose the most suitable option from our selection of efficient and fast-charging batteries.

The standard battery
runtime with a P3 filter



Charging time

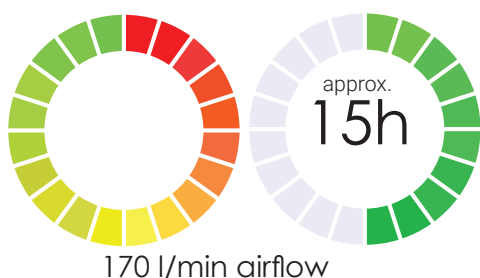


Ord.No. 950017 standard battery

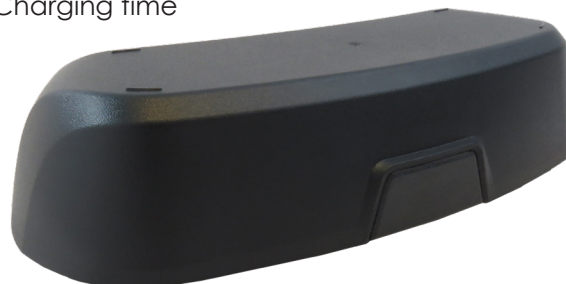
Maximum Power for the Entire Day

With our standard battery, you can work effortlessly for several hours. For long workdays and special projects, you can choose the additional high-capacity battery, which offers an impressive runtime of up to 15 hours! The extended power cell is recommended when using an A2-gas filter or an E1B1E1K1-filter, ensuring you avoid unnecessary stops and interruptions to your work.

High-capacity battery
runtime with a P3 filter



Charging time



Ord.No. 950027 high-performance battery

Evermatic AirTec

Accessories and optional equipment

Each blower unit comes with harnesses and a padded belt to securely hold the blower in place.

Ord. No. 950092 wide support belt



Ord. No. 950041 shoulder straps

Do you want to enhance comfort or ensure safety in special work conditions?

Choose from our accessories the fire-resistant leather belt that not only withstands the test of time and use but also provides safety in challenging environments.

If you need a harness that provides ergonomic support, we recommend our carrying harnesses designed for long-term use. They are developed to offer maximum comfort and distribute the blower's weight more evenly. This reduces strain on your body and allows you to safely complete your tasks.



Ord. No. 950093 leather support belt



Ord. No. 950094 back support belt



Ord. No. 150003M hose cover



Ord. No. 950060 hose

Lightweight, Flexible, and Spark-Resistant Air Hose

The air hose connected to the Evermatic Airtec blower unit is flexible, versatile, and lightweight. Designed with comfort and usability in mind, the hose also includes a spark-resistant hose cover to ensure your safety in demanding environments

The Evermatic Bag

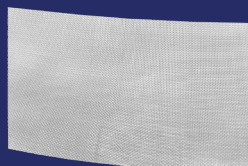
Evermatic's equipment bag is spacious and made from durable material. It features an adjustable shoulder strap and carrying handles, making it easy to transport both large and small items. Size 50 x 30 x 25.

Ord. No. 950007 Evermatic bag

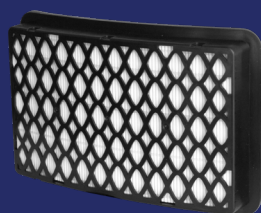


Evermatic AirTec

Included parts in the package



Ord. No. 950040
spark arrestor



Ord. No. 950010
P3 filter



Ord. No. 950015
pre-filter



Ord. No. 950060 hose and
Ord. No. 150003M hose cover



Ord. No. 950030
battery charger



Ord. No. 950017
Li-ion battery 14.4/3.2Ah



Ord. No. 950000EV
motor unit



Ord. No. 950092
support belt, wide



Ord. No. 950041
shoulder straps



Ord. No. 950000EV Evermatic AirTec
motor unit complete package

Evermatic AirTec

Compatible masks and hoods

Welding helmets are among the most important protective gear items when welding, grinding and finishing a metal piece. A proper a proper welding helmetprotects your eyes and skin from damage. The following high-quality and durable helmets, made in Finland, are compatible with our Evermatic AirTec blower.

Evermatic Air TH3

- Welding glass 60 x 110 mm
- includes protective fabrics and air channel
- also available with hearing protection

Order numbers for Evermatic Air masks
 160 003 60x110 mm EN9 + UV-filter EN1,7
 130 003 60x110mm Auto EN10
 130 005 60x110mm Auto EN11



Evolve Air TH3

- Welding glass 90 x 110 mm
- Grinding visor 90 x 150 mm
- Well-balanced
- Fire-rated PA66 polyamide
- CE / EN 175 / EN 166 approved
- Also available with auto-darkening lenses

Order numbers for Evolve Air mask:
 400 011 with black passive lens 90x110 mm EN10
 400 012 90x110 mm Auto EN9-13 (cell & battery)

Also available with auto-darkening lenses:
 132015 Auto-darkening welding glass 90x110 9-13
 (cell & battery)
 405110 Auto-darkening welding glass 90x110 9-13
 AerTEC X110 True Color



Euromaski Air TH3

- Large grinding and welding visor
- Well-balanced
- Lightweight – only 560 g
- Fire-rated polyamide, protective visors made of polycarbonate
- Approved to EN 12941 TH3, EN 14594 2A, EN 175 B, EN 166 B

Order number for Euromaski Air mask:
 709 500 DIN 1,7+8
 709 501 DIN 1,7+10



Evermatic AirTec

Compatible masks and hoods

Maskilo M10 Air TH3

- Welding glass 90 x 110 mm
- includes air channel and sealing kit
- also available with hearing protection
- also available with auto-darkening lenses

Order numbers for Maskilo M10 Air mask:

600 002 90 x 110 mm EN10, black passive lens

600 031 90 x 110 mm auto EN9-13, cell & battery

Also available with auto-darkening lenses:

132015 Auto-darkening welding glass 90x110 9-13 (cell & battery)

405110 Auto-darkening welding glass 90x110 9-13 AerTEC X110 True Color



Evermatic AirTec EV1 & EV2

The Evermatic AirTec EV1 and EV2 hoods protect the respiratory system, face, neck, and collar when used with the AirTec PAPR unit. The hoods feature an adjustable visor and headband, providing a wide field of view through the anti-fog panoramic visor. The lightweight nylon fabric, spacious cut, and flexible elastic band make the hoods comfortable for extended use.

Applications:

- ° Spraying and painting tasks
- ° Laboratories and pharmaceuticals
- ° Agriculture and food industry
- ° Wood processing and mining industry

Order numbers for Evermatic AirTec EV2 hood: 950220 long hood



Order numbers for Evermatic AirTec EV1 hood: 950120 short hood



Specifications

| | |
|------------------------------------|---|
| Low Speed | 170+ lpm |
| Maximum Speed | 210+ lpm |
| Charging Time | Approx. 1 hour |
| Battery Life | Approx. 9 hours at speed of 170+ lpm; Approx. 5-6 hours at speed of 210+ lpm |
| Filter efficiency | >99,9997 % |
| Battery Type | Rechargeable Li-ion battery |
| Battery lifespan | At least 500 charges |
| Weight | 1020 g |
| Operating temperature | -5 °C - 55 °C |
| Storage temperature | -10 °C - 55 °C |
| Relative operating humidity (R.H.) | >90 % |
| Relative storage humidity (R.H.) | >85 % |
| Alarm | Audible alarm, visual alert, vibration alert |
| Standard | TH3 EN 12941:1998+ A1:2003+A2:2008 |



Product codes

| | |
|----------|---|
| 950000CH | Evermatic AirTec chemical motor unit |
| 950000EV | Evermatic AirTec motor unit complete |
| 950007 | Evermatic bag |
| 950010 | Evermatic AirTec P3 filter |
| 950015 | Evermatic AirTec pre-filter |
| 950017 | Evermatic AirTec Li-ion battery 14.4/3.2Ah |
| 950018 | Evermatic AirTec odor filter |
| 950019 | Evermatic AirTec A2 combination filter |
| 950020 | Evermatic AirTec Chemical A1B1E1K1 combination filter |
| 950027 | Evermatic AirTec high-capacity battery Li-ion 14.4/6.4 Ah |
| 950030 | Evermatic AirTec battery charger |
| 950040 | Evermatic AirTec spark arrestor |
| 950041 | Evermatic AirTec shoulder straps |
| 950045 | Evermatic AirTec filter cover |
| 950050 | Evermatic AirTec blower indicator |
| 950060 | Evermatic AirTec hose |
| 950061 | Evermatic AirTec hose O-ring |
| 950065 | Evermatic AirTec hose cover (spark-resistant) |
| 950092 | Evermatic AirTec support belt, wide |
| 950093 | Evermatic AirTec support belt, leather |
| 950094 | Evermatic AirTec back support belt |
| 950120 | Evermatic AirTec EV1 short hood |
| 950220 | Evermatic AirTec EV2 long hood |
| 400011 | Evolve Air (black passive lens) 90 x 110 EN10 |
| 600002 | Maskilo M10-Air EN10 90 x 110 |
| 160003 | Evermatic-Air EN9 60 x 110 |
| 709500 | Euromaski Air shade 1.7+8 |
| 709501 | Euromaski Air shade 1.7+10 |

EVERMATIC

Halmeenkatu 3 38700 Kankaanpää, FINLAND

+358 40 083 3180

evermatic@evermatic.fi

www.evermatic.fi

